

VIA **SMART HOME PRODUCTS™**

security system **PRO**



Quick Start Guide

5 EASY STEPS TO CONNECT & PROTECT

- 1 Downloading the Application
- 2 Connecting Your Camera Hub
- 3 Adding Your Accessories
- 4 Security Alarm Settings
- 5 Viewing & Documenting Intruders



Step 1: Downloading the Application

Let's get started! **Begin by connecting to your WiFi.** Download the **“Yoosee”** application which can be found on the App Store (for iOS users) and on Google Play (for Android users). Once installed, follow the instructions on your screen to begin setting up your security devices. We highly recommend that you allow **“Yoosee”** to send you important notifications which may include software updates and enhancements (diagram A).

1. Select **“Quick Register”** (diagram C).
2. Input your information and click **“Get a verification code”** (diagram D).
3. Input the verification code, create a new password and agree to the **“User Agreement”**. Select **“Register”** (diagram E).

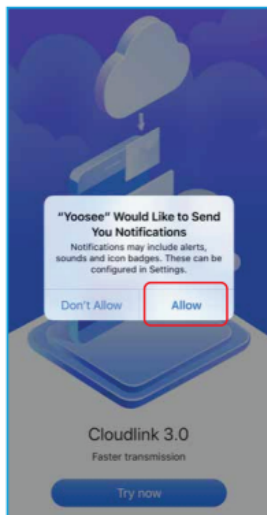


diagram A



diagram B

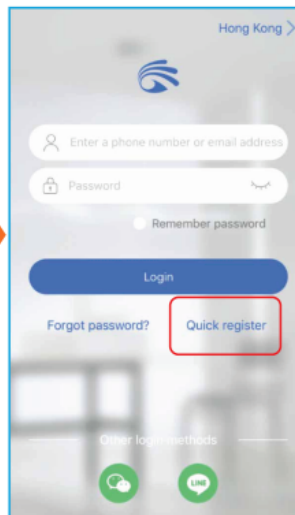


diagram C

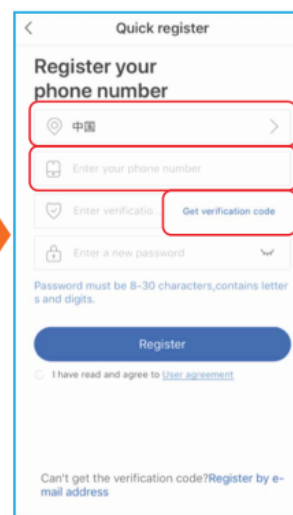


diagram D

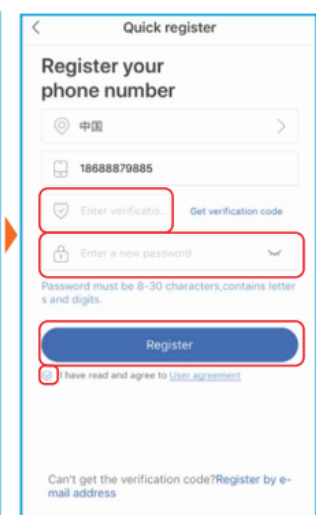


diagram E



Step 2: Connecting Your Camera Hub

1. Plug in your camera hub.
2. Click “Add New Device” (diagram A) and select “Scan” (diagram B).
3. Allow the “Yoosee” app to access your camera and scan the QR code located on the back of your camera hub (diagram C).
Once scanned, the camera hub should start beeping.
4. **If the camera hub does not start beeping, reset the device.** The reset button is located on the back of the camera hub.
5. Your device is now searching for the camera hub. This may take up to 1 – 2 minutes (diagram D).

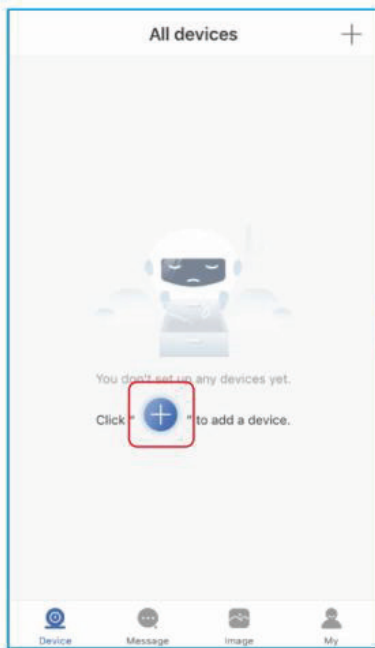


diagram A

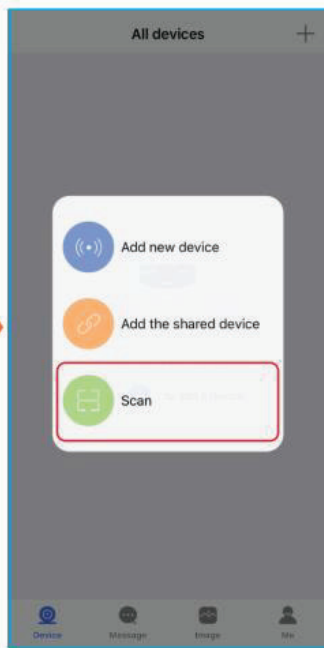


diagram B



diagram C

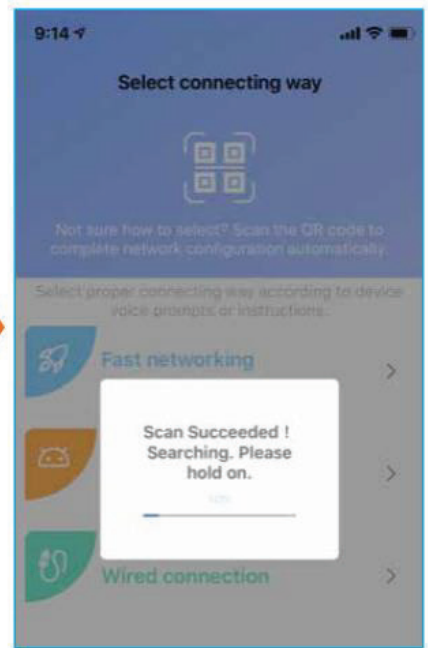


diagram D



Step 2: Connecting Your Camera Hub Continued

6. Select your WiFi, enter your WiFi password and click “Next” (diagram A).
7. You’re almost there! Position the camera hub lens to face the QR code on your screen. You can also enlarge the QR code by clicking on it (diagram B). Maintain a distance of 4 – 8 inches between your device and the camera hub. Once connected, click “I heard Scan code successfully” (diagram C).
8. Your device is now working with the cloud to set up. It may take up to 1-2 minutes (diagram D).
9. Once connected, click “Confirmed. Check my device” (diagram E), “Check my device” (diagram F) and “Close RTSP” (diagram G).

Your camera hub is good to go!



diagram A



diagram B



diagram C



diagram D

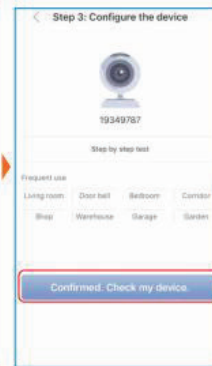


diagram E

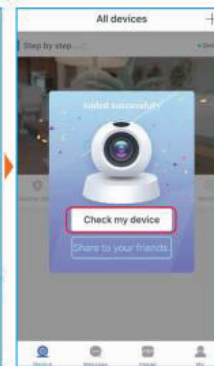


diagram F

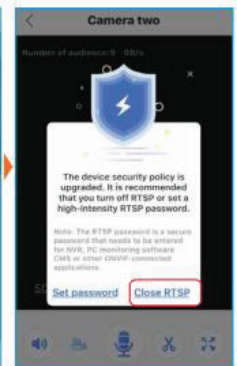


diagram G



Step 3: Adding Your Accessories

1. Turn on your accessories. There is a on/off switch located on the bottom of the entry sensors and on the back of the motion sensor.
2. Head over to your “Settings” (diagram A), select “Alarm Settings” and click into “Alarm mode” (diagram B).
3. Ensure the “Receive alarm prompt” is enabled and click “Add sensor” (diagram C).
4. Click the “+” under “Common sensor” to add the entry and motion sensors (diagram D).

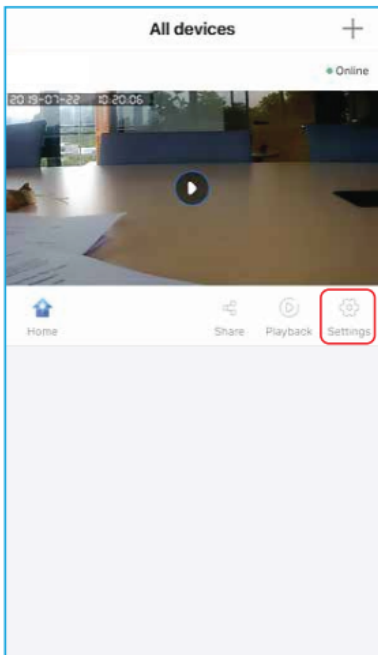


diagram A

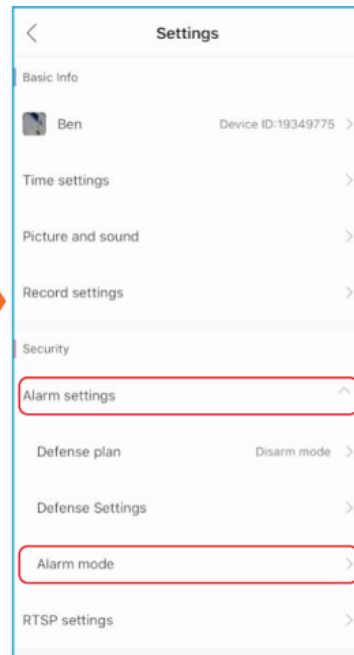


diagram B

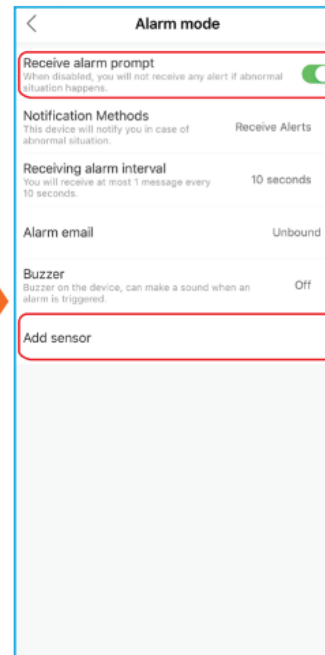


diagram C

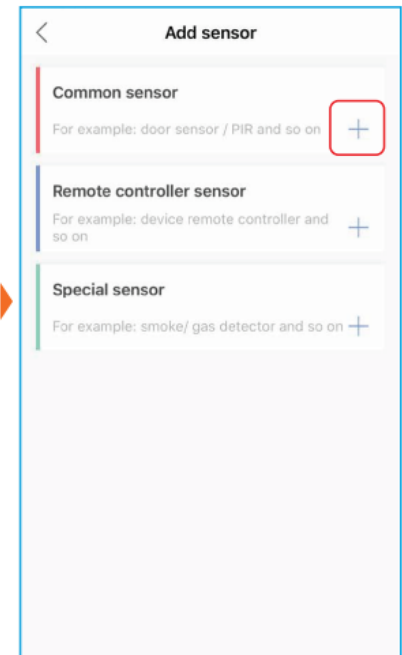


diagram D



Step 3: Adding Your Accessories Continued

- Go ahead and hit “Confirm” (diagram A) and immediately push the pairing button on your entry sensor (diagram B) to pair. Once your entry sensor is paired, click the “+” button again and place the motion sensor next to your phone. The motion sensor will connect automatically (diagram C).
- Once added, the sensor function should be turned on. You can now rename the sensor by clicking on the edit icon (diagram D).

You're all set!

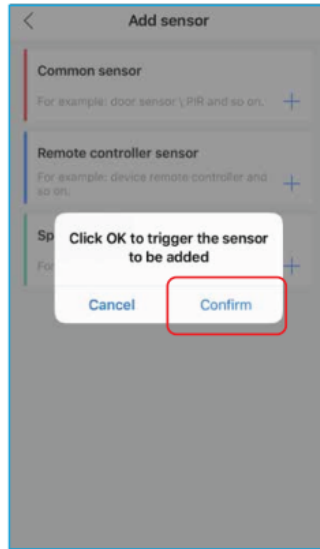


diagram A



diagram B



diagram C

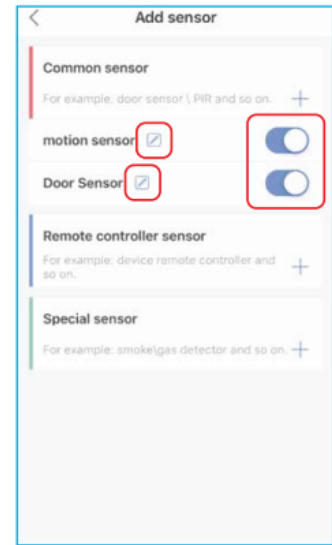


diagram D



Step 4: Security Alarm Settings

1. Head over to your “Settings” (diagram A), select “Alarm settings” and click “Defense Settings” (diagram B)
2. Enable “Motion detection” to ensure that you receive notifications when movement is detected. The VIA SMART HOME PRODUCTS™ camera hub does not support the “Object tracking” feature. Click save (diagram C).
3. **You can now enable and disable your notifications on the camera view page. When home, ensure that the icon is marked “Home” so that notifications are not accidentally triggered. When out, ensure to click on the icon to show “Away” so that your devices are armed (diagram D).**
4. We recommend that you keep the “Yoosee” app opened and in the background of your mobile device so that you can be notified.

Intruders beware!

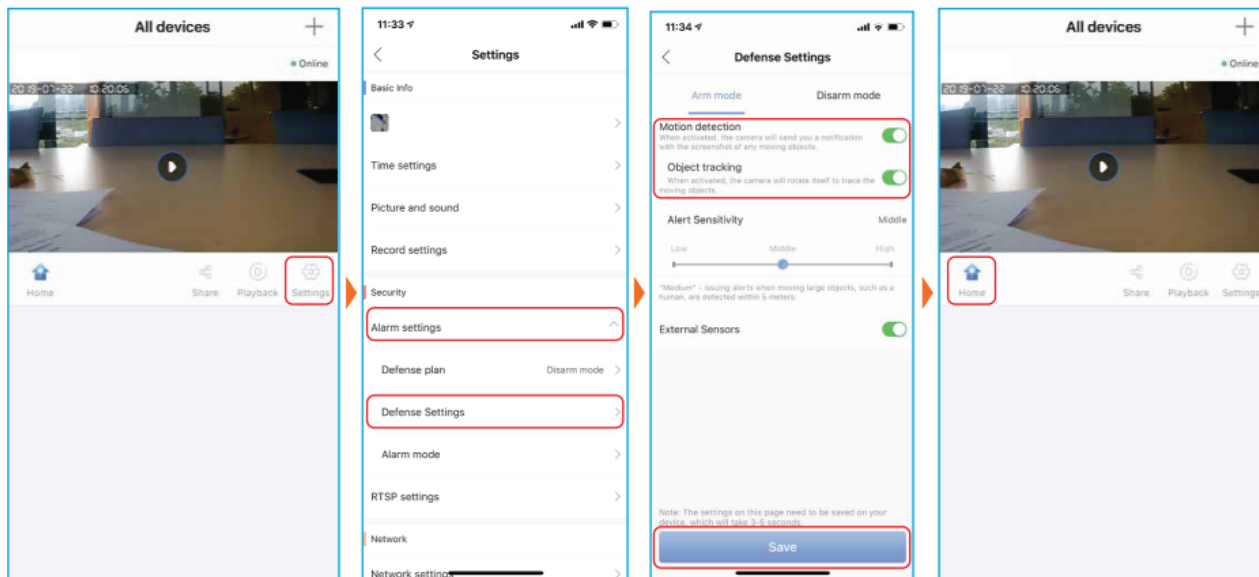


diagram A

diagram B

diagram C

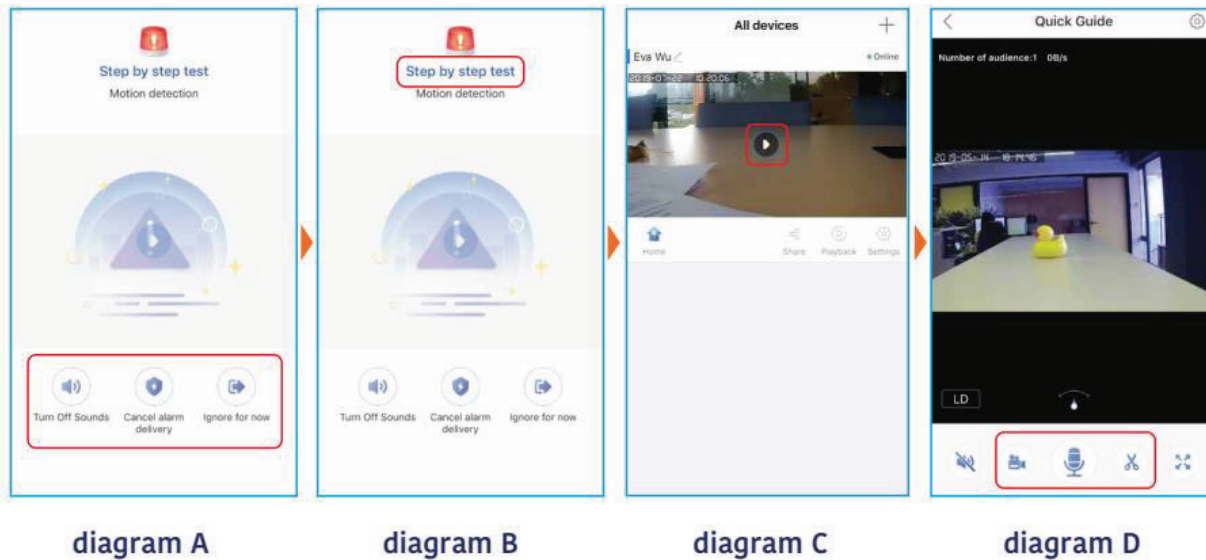
diagram D



Step 5: Viewing & Documenting Intruders

1. When an alarm is triggered, you have options to “Turn Off Sounds” (kills the siren), “Cancel Alarm Delivery” (turns off future alerts), or “Ignore For Now” (kills the alert and exits screen) (diagram A).
2. You can identify which sensor is triggered by reading the sensor name which is located at the top of your screen (diagram B).
3. Catch your intruder! Click “Play” (diagram C) and begin recording by clicking on the camera icon (your recordings are automatically stored in the “Image” folder in your app). You also have the options to talk by holding down the microphone icon and screenshot by clicking on the scissors icon (diagram D).

YOU'RE PROTECTED!



NEED HELP?

Customer Service Contact Information
☎: (508) 473-7688 or (800) 639-3803
✉: support@fourstari.com

Instructional Video 

Link: <http://www.fourstari.com/support/via-smart-home-products-instructional-video/>



Protected by

VIA **SMART HOME PRODUCTS™**

security system **PRO**

24 HOUR
SURVEILLANCE