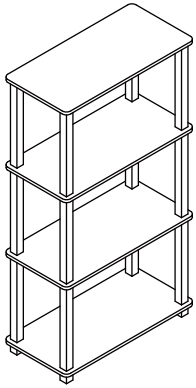




fourstargroup

Total maximum weight limits 31 Lbs.

Each shelf 7.75 Lbs.



# MODEL: 11210416CB 4 TIER BOOKSHELF

BEFORE YOU BEGIN, PLEASE READ ASSEMBLY INSTRUCTIONS CAREFULLY. FOLLOW THEM STEP BY STEP.

CAUTION:

1. ADULT SUPERVISION IS REQUIRED DUE TO SMALL PARTS. CARE SHOULD BE TAKEN IN THE UNPACKING AND ASSEMBLY OF THE PRODUCT.
2. ASSEMBLE ON SOFT SURFACES TO PREVENT DAMAGE TO THE PRODUCT FINISH.
3. MAKE SURE ALL PARTS ARE INCLUDED BEFORE ASSEMBLY.
4. NOT FOR USE ON HIGH PILE CARPETING.
5. PLACE DESK ON FLAT LEVEL SURFACE.

Do you have any questions? Missing small parts or hardware? If you need assistance with the assembly of your 4 TIER BOOKSHELF please e-mail our Customer Service Department at: [support@fourstari.com](mailto:support@fourstari.com) or call us at (800) 639-3803 if calling locally from Massachusetts area

Please include the following information in your email:

- Where item was purchased • Item, model, style or SKU number listed on instructions or box • Part number, description of the part and quantity needed
- This information will help us get the proper part to you faster

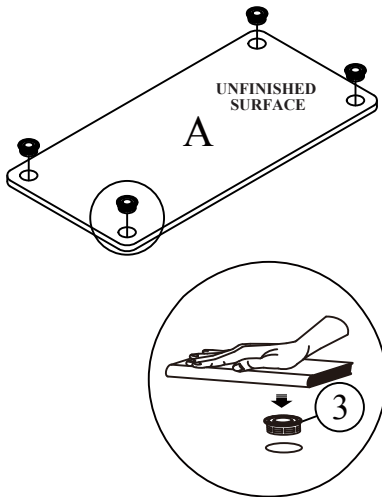
BEFORE YOU BEGIN, PLEASE READ ASSEMBLY INSTRUCTIONS CAREFULLY. FOLLOW THEM STEP BY STEP.

NO	HARDWARE LIST	QTY
1	LONG SQUARE TUBE	12 PCS
2	PE SQUARE LEG	4 PCS
3	PE INSERT CAP	4 PCS
4	CABLE TIE	2 PCS
5	EYELET SCREW	2 PCS
6	WALL PLUG	2 PCS

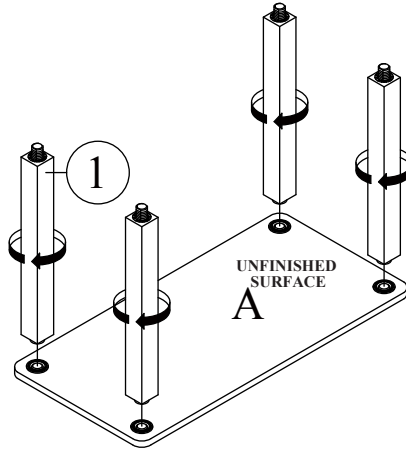
NO	PARTS LIST	QTY
A	TOP PANEL	1 PC
B	SHELF PANEL	3 PCS

ASSEMBLY INSTRUCTIONS

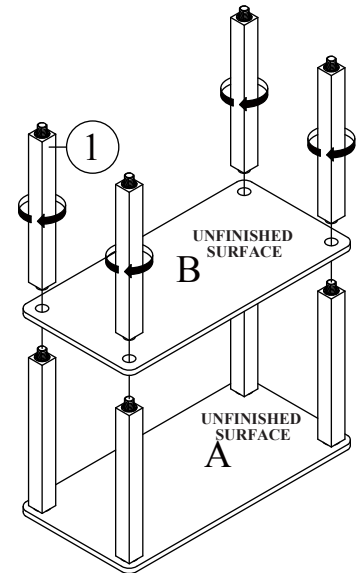
**STEP 1**  
FACE DOWN PANEL (A).  
INSTALL INSERT CAP (3) INTO PANEL (A),  
PUSH DOWN FIRMLY.



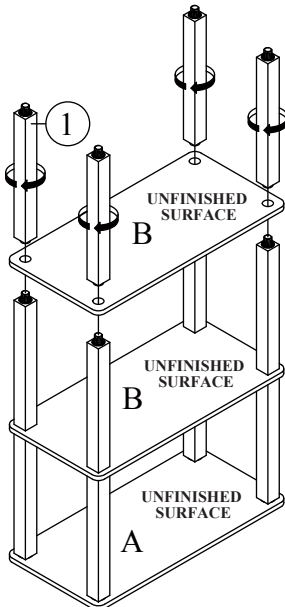
**STEP 2**  
ATTACH LONG SQUARE TUBE (1) TO TOP  
PANEL(A) AND TIGHTEN IT.



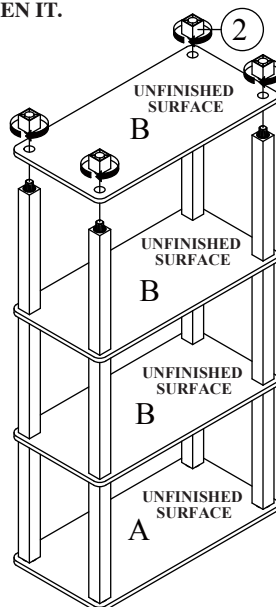
**STEP 3**  
ATTACH LONG SQUARE TUBE (1) TO  
SHELF PANEL (B) AND TIGHTEN IT.



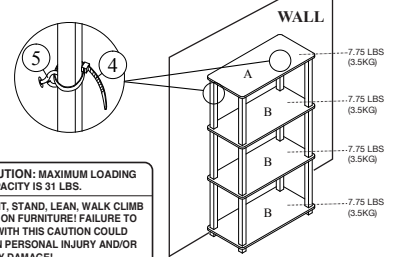
**STEP 4**  
ATTACH LONG SQUARE TUBE (1) TO  
SHELF PANEL (B) AND TIGHTEN IT.



**STEP 5**  
ATTACH LONG SQUARE TUBE (1) AND  
SQUARE LEG (2) TO SHELF PANEL(B) AND  
TIGHTEN IT.

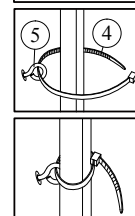
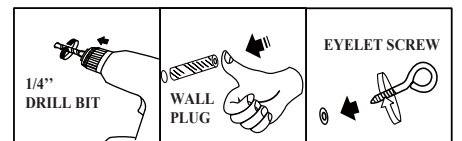


PLEASE FOLLOW BELOW INSTRUCTION  
TO PREVENT PRODUCT TIP OVER.



**CAUTION: MAXIMUM LOADING CAPACITY IS 31 LBS.**

DO NOT SIT, STAND, LEAN, WALK CLIMB OR JUMP ON FURNITURE! FAILURE TO COMPLY WITH THIS CAUTION COULD RESULT IN PERSONAL INJURY AND/OR PROPERTY DAMAGE!



This unit is intended for use only with the products and maximum weights indicated. Use with other products or products heavier than the maximum weights indicated may result in instability causing possible injury. Furniture can tip over or break if improperly moved. Have a friend help to lift and carry the unit to its new location.