

Starlogic

USB Turntable

Item number 62904201



Installation & User's Guide

All brand names and trademarks are the property of their respective owners.

Overview

Convert your vinyl record collection to MP3/WAV files for playback on digital media players

The Starlogic USB Turntable allows you to convert your vinyl album collections to MP3/ WAV or Ogg music files with the included Audacity Music software. The USB turntable can also serve as a phono / line level output source for connection to any home stereo with an AUX input.

Audacity Music Software is included free with the Starlogic USB Turntable and provides you with a professional software format that enables you to convert and edit your records and place them into files on your computer's digital music library.

Key Features

- USB Compatible
- 33 1/3, 45 and 78 RPM
- RCA outputs
- Quiet belt driven turntable

System Requirements

- PC running Windows 2000, XP, Vista*
- MAC* running OS9 or higher
- One available USB1.1 port or higher
- Compatible with most standard operating system drivers

Includes

- Dustcover
- Slipmat
- USB Cable
RCA cable
- Recording Software CD
- 45 RPM Adapter

Precautions

Safety Information

CAUTION

1. In order to shut off the power of this product completely, unplug the power cord from the wall outlet. Be sure to unplug the unit if you do not intend to use it for an extended period of time.
2. If this product develops trouble, contact our service center, and do not use the product in defective state.

Safety Precautions

WARNING:

To reduce the risk of fire or electric shock, do not expose this appliance to rain or moisture.

CAUTION

RISK OF ELECTRIC SHOCK DOES NOT OPEN

To reduce the risk of electric shock: do not remove cover (or back).
No user serviceable parts inside. Refer servicing to qualified service personnel.



The lightning flash with arrowhead symbol, within an equilateral triangle, is intended to alert user to the presence of uninsulated "dangerous voltage" within the product's enclosure that may be of sufficient magnitude to constitute risk of electric shock to persons.



The exclamation point within an equilateral triangle is intended to alert user to the presence of important operating and maintenance (servicing) instructions in the literature accompanying the appliance.

Before Use

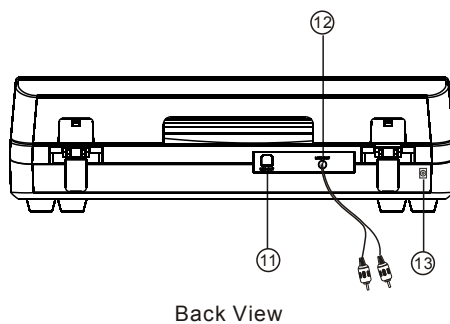
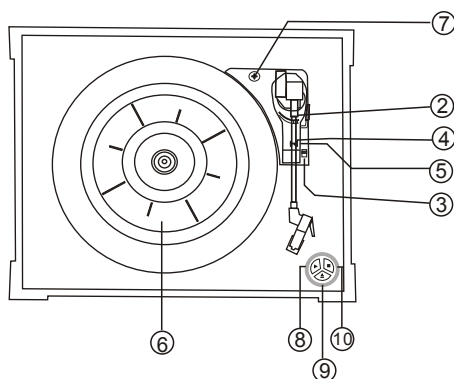
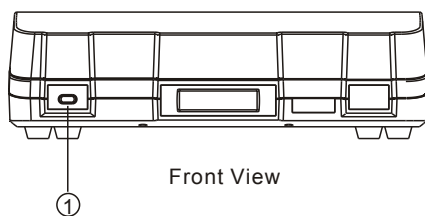
1. Choose unit installation location carefully. Avoid placing it in direct sunlight or close to a source of heat. Also avoid locations subject to vibrations and excessive dust, cold or moisture. Keep away from sources that hum, such as transformers or motors.
2. Do not open the cabinet as this might result in damage to the circuitry or electrical shock, if a foreign object should get into the set, contact your dealer.
3. Be sure not to handle records with dirty fingers. Never play a record that has a crack on the surface.
4. When removing the adapter from the wall outlet, always pull directly on the adapter, never pull the cord.
5. Do not attempt to clean the unit with chemical solvents as this might damage the finish. Use a clean, dry cloth.
6. In order to shut off the power to this product completely, unplug the adapter from the wall outlet. Be sure to unplug the unit if you do not intend to use it for an extended period of time.
7. Keep this manual in a safe place for future reference.

Beware of Condensation

When the turntable is moved from a cold to a warm place or is used after a sudden temperature change, there is a danger of condensation. Water vapor in the air could condense on the mechanism. To prevent this, if you are going to use the turntable in a condition where condensation could occur, you should leave the turntable on for 1 or 2 hours after plugging it into an AC outlet depending on the amount of condensation. If this is done, the turntable will stabilize at the temperature of its surroundings.

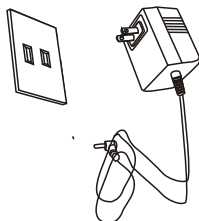
Location of parts

1. POWER SWITCH
2. TONE ARM
3. SPEED CONTROL SWITCH
4. SECURITY HOOK
5. TONE ARMREST
6. TURNTABLE
7. SUSPENSION SCREW
8. PLAY BUTTON
9. EJECT BUTTON
10. STOP BUTTON
11. USB JACK
12. LINE OUT
13. DC JACK

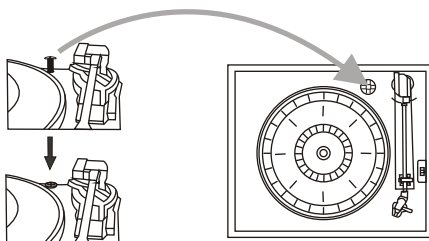


Preparation for Use

1. Remove all the packaging from the unit.
2. Connect the AC adaptor to the turntable and then to an AC outlet.



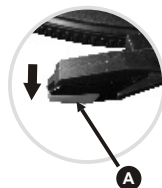
3. The suspension screw protects the phonograph chassis during transportation. Turn this screw clockwise to release the turntable suspension system. This will allow the turntable to absorb any vibrations while playing.



How To Replace The Stylus

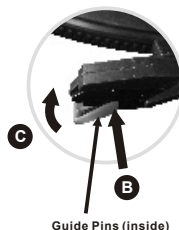
Removing old stylus

1. Set a screwdriver at the tip of the stylus and push down to the direction "A".
2. Remove the stylus by pulling it down and forward.



Installing a new stylus

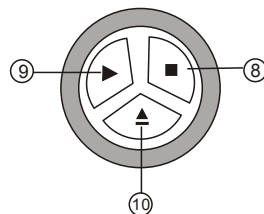
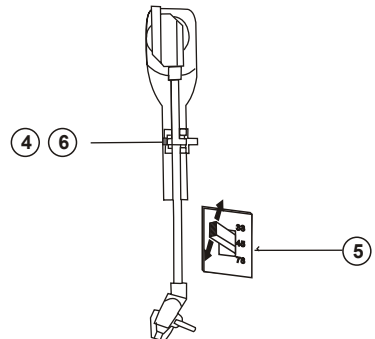
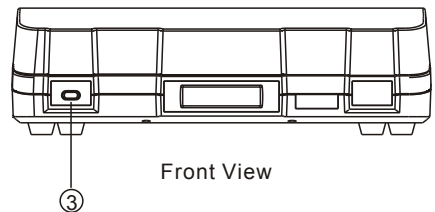
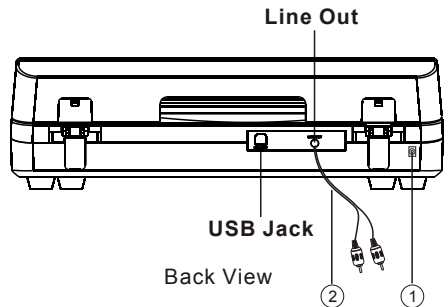
1. Hold the tip of the stylus and insert the other edge by pressing in the direction "B".
2. Push up in the direction "C" until it locks at the tip.



Guide Pins (inside)

Listening to a Record

1. Connect the AC adapter to the main power supply, the standard is 120V-60Hz, and output DC 9V.
2. Plug the other ends of the RCA Cable into the auxiliary input (Aux) on your TV, home entertainment receiver or other music system, be sure that the red RCA Cable is inserted into the red jack and the white RCA Cable is inserted into the white jack. (optional)
3. Switch on the unit using the POWER switch on the front.
4. Put a record onto the turntable, when playing the 45rpm record, remember to use the adapter.
5. Select correct speed according to the record you are playing.
6. Remove the tone arm from the holder, lift the cue-lever and move the tone arm gently to the desired position over the record, lower the cue-lever slowly, then the record will begin playing.
7. Turn on the receiver which you connected to this USB turntable by using the On/off Knob or Volume knob, adjust the volume knob to control the volume of the music.
8. Press STOP button to stop playing.
9. Press the PLAY button to continue playing.
10. When the music is finished playing, and the tone-arm reaches the end of the record, the tone-arm will return to the arm-rest automatically. Or you can press the eject button when playing the record, the tone arm will lift from the record and then back to the arm-rest.



Audacity Music Software and USB Computer Connection



Installing the Audacity Software


Install the Audacity software in your Computer, the disc is compatible with the USB turntable.

- Insert the Audacity disc into the CD drive of your computer.
- Click on My Computer on the desktop.
- Double click CD drive to view the contents of the Audacity disc.
- Double click Audacity Set Up to install the Audacity software according to the instructions.
- ★ Footnote: If you misplace your software CD or it becomes damaged, you may download Audacity software online at: <http://download-audacity.org/>

Install the USB Driver

- Make sure the Audacity disc is still in your CD drive.
- Using the included USB cable, connect the turntable to your computer.
- Follow screen instructions to install the USB driver.

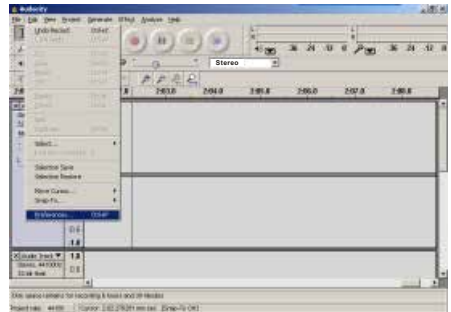
Running the Software

1. Double click the Audacity software icon  and it will open the following interface;

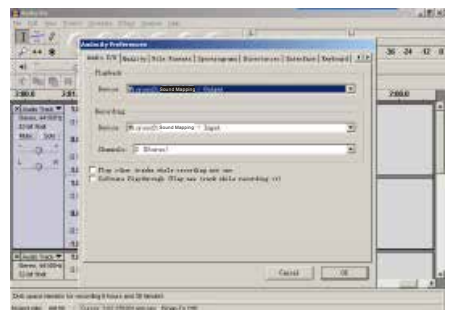


2. Using the attribute control button at the top of the screen, go to beginning, Play, Record, Pause, Stop and go to end. Use the File, Edit, View, Project, Generate, Effect and Analyze menus to Save, Export, and edit the music.

3. Select preferences at the bottom of the menu which will open up Audacity Preferences. You can set the Audio I/O, Quality, File Formats, Spectrograms, Directories, Interface, Keyboard and Mouse in the Audacity preference Interface.

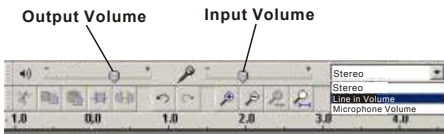


Audacity Preferences

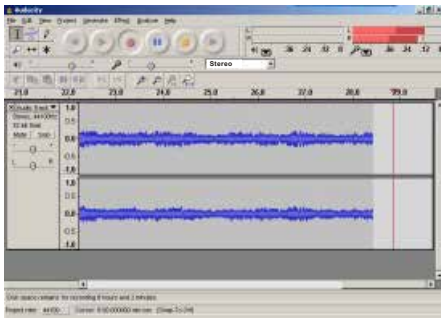


Audacity Music Software and USB Computer Connection

4. Adjust the output and input volume.

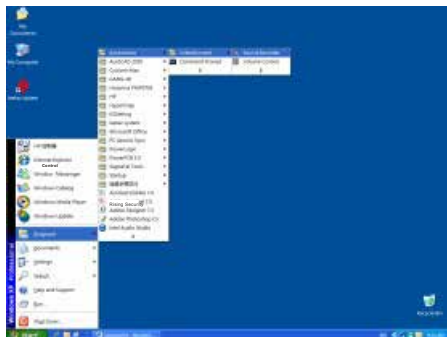


5. Select the record button (●) to record the disc, the left and right tracks will show on the interface;



If you do not have the fluctuant wave on the interface when recording, please adjust the line in volume as follows:

① Click in the left corner of the computer, Select , , and it will open the sound record interface.



② Sound Recorder Interface



③ Select Edit and click in the bottom of the menu to open interface;

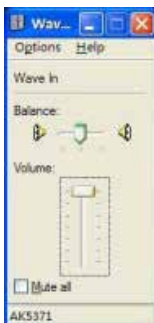


Audacity Music Software and USB Computer Connection

③ Audio Properties Interface



④ Select sound recording volume and come into.....interface;



Adjust the line in volume to the upper or middle, of the scale, the fluctuant wave should now show on the interface when recording.

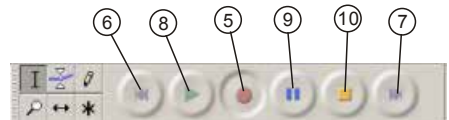
6. Click the (⏮) button to skip to start;

7. Click the (⏭) button to skip to end;

8. Click the (▶) button to play;

9. Click the (⏸) button to pause the record play;

10. Click the (■) button to stop the Recording.



11. Export the Music Files for WAV, MP3, Ogg Format.

Once you have finished the recording, you should save your music to the computer.

- Click File menu and move down to Export as WAV format, MP3 format or Ogg format.
- Click one format to save the music, and you will be asked for the file name of the music recorded.

- **Note:** Audacity does not export MP3 files directly, you should download the LAME MP3 encoder, which is named lame_enc.dll.

Specifications

TURNTABLE SECTION

Motor.....	DC servo motor
Drive System.....	Belt Drive
Speeds.....	33-1/3 rpm, 45 rpm and 78 rpm
Wow&Flutter.....	Less than 0.25%(WTD)
S/N Ratio.....	More than 50 dB
Cartridge Type.....	Ceramic Stereo Cartridge
Stylus.....	402-M208-165
Output Level.....	160-380 mV (5 cm/sec at 1 KHz)

GENERAL

Power Requirements.....	Input: AC 120 V~ 60 Hz Output: DC 9V~ 800 mA
Power Consumption.....	5 W
Standard Accessories.....	Operating Instruction Booklet 45 rpm Adapter

Troubleshooting Guide

In case of trouble with the unit ,please look through this chart and see if you can solve the problem by yourself before calling our tech support 800 639 3803 Line.

Problem		cause	solution
• • • • • • •	Power does not come on when the power switch is pressed.	Unit is unplugged.	Connect the unit to the AC power supply.
	The sound is noisy.	The unit is too close to a TV set or another similar appliance.	Turn off the TV or other appliance, and relocate the unit.

FCC and CE Radiation Norm

FCC

This equipment has been tested and complies with limits for Class B digital devices pursuant to Part 15 of Federal Communications Commission (FCC) rules.

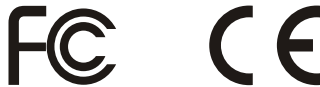
CE

This equipment has been tested and complies with the limits of the European Council Directive on the approximation of the law of the member states relating to electromagnetic compatibility (89/336/EEC) according to EN 55022 Class B.

FCC and CE Compliance Statement

These limits are designed to provide reasonable protection against frequency interference in residential installations. This equipment generates, and radiates radio frequency energy, and if not installed properly or used in accordance with the instructions, may cause harmful interference to radio communication. However, there is no guarantee that interference will not occur in television reception, which can be determined by turning the equipment on and off. Interference may be corrected by one or more of the following measures:

- Reorient or relocate the receiving antenna
- Increase the separation between the equipment and the receiver
- Plug the equipment into an outlet on a circuit different from that to which the receiver is connected.



CAUTION!

The Federal Communications Commission warns the user that changes or modifications to the unit not expressly approved by the party responsible for compliance could void the user's authority to operate the equipment.

Service Procedure

After 14 days of purchase, please call the toll free number below to obtain service. A customer representative will give you a return authorization number (RA number) allowing you to ship your product to the service center.

Please have the following information available when you call the service center:

- ☐ Your Name and Address
- ☐ Date of Purchase
- ☐ Model Number
- ☐ Serial Number
- ☐ Store Name and Address
- ☐ Store Location Number
- ☐ Type of problem with the unit

After receipt of the RA number:

- ☐ Send the complete unit, to the address below.
- ☐ Include a copy of the original receipt for proof of purchase (within 90 Days).
- ☐ Write the RA number on the outside of the package. Packages without RA numbers will not be accepted.
- ☐ The purchaser is responsible for any shipping charges to the repair facility and assumes all risk.
- ☐ The service center will repair or replace the unit and send it back to the purchaser within 10 working days from receipt of the unit.

To contact the service facility, please call 508-435-4830 or (800) 639-3803. The address for this facility is:

Four Star Group
26840 Fargo Ave. Suite C
Bedford Heights, OH 44146

Email Support: techsupport@fourstari.com

Warranty

90 Day Limited Warranty

This product is warranted to be free from defects in material and workmanship for a period of 90 days. Warranty obligations are limited to replacement or repair of defective parts and components, at the option of the manufacturer. The warranty of this product is null and void if the product is subjected to negligence, abuse, modification, misuse, accident or if the customer uses the product for a function it was not intended for. This warranty is only valid for the original purchaser of this product and will not be honored if the product is resold.

The manufacturer will not be liable for incidental or consequential damages caused by the use of this product. The manufacturer will not be liable for any costs such as lost profits or revenues, cost of temporary replacements, loss of data, loss of equipment or use of equipment or any claims by third parties.

After 14 days from purchasing the product, please call the phone number mentioned below to obtain service. DO NOT RETURN THIS PRODUCT TO THE STORE. A customer representative will give you a return authorization (RA number) allowing you to ship the product to the service center. The purchaser must have a copy of the original receipt for proof of purchase within 90 days. The purchaser of this product is responsible for any shipping charges to the repair facility. The manufacturer service center will repair or replace the unit in question and send it back to the purchaser within 10 working days of receipt of the unit.

In order to contact the service facility, please call **508-435-4830** or 800-639-3803.
The address for this facility is:

Four Star Group
26840 Fargo Ave.
Unit C
Bedford Heights, OH 44146

E-mail Support: techsupport@fourstari.com