

DPF-768FJ

Digital Photo Frame

USER MANUAL



TABLE OF CONTENTS

Important Safeguards.....	3
Frequently Asked Questions.....	6
Quick Start Guide.....	7
Controls.....	8
Remote Control.....	9
Control Functions.....	10
Advanced Operations: Installing Drivers.....	15
Advanced Operations: USB Connection to Computer.....	16
Glossary of Terms.....	17
Technical Specifications.....	18

IMPORTANT SAFEGUARDS

Signal Word Definitions

DANGER - Indicates an imminently hazardous situation, which, if not avoided, will result in death or serious injury. Usage of this signal word is limited to the most extreme situations.

WARNING - Indicates a potentially hazardous situation, which, if not avoided, could result in death or serious injury.

CAUTION - Indicates a potentially hazardous situation, which, if not avoided, may result in minor/moderate injury or product/property damage. It also alerts against unsafe practices.

WARNING: To reduce the risk of fire or shock hazard, do not expose this product to rain or moisture.

WARNING: To prevent the risk of electric shock, do not remove cover. No user-serviceable parts inside. Refer servicing to qualified personnel.

READ ALL INSTRUCTIONS BEFORE USE.

WARNING-- To reduce the risk of fire, electric shock, or serious personal injury:

- ◆ **HEED WARNINGS.** Adhere to all warnings in the operating instructions and on the Digital Photo Frame itself.
- ◆ **WATER AND MOISTURE.** Do not use the unit near water or expose to rain or moisture.
- ◆ **ATTACHMENTS.** Use only manufacturer-recommended attachments or accessories.
- ◆ **ACCESSORIES.** Do not place the Digital Photo Frame on an unstable cart, stand, tripod, bracket, or table. The unit may fall, causing injury to you and serious damage to the product.
- ◆ **VENTILATION.** Position the Digital Photo Frame so that its location does not interfere with its proper ventilation. For example, the unit should not be situated on a bed, sofa, rug or similar surface that may block the ventilation opening, or placed in a built-in installation, such as a book-case or cabinet, that may impede the flow of air through the ventilation openings.
- ◆ **HEAT.** Position the Digital Photo Frame away from sources of high heat such as radiators or stoves.
- ◆ **POWER SOURCE.** Connect the Digital Photo Frame to a power supply only of the type described in the operating instructions or as marked on the unit.
- ◆ **POWER CORD PROTECTION.** Route power cords so that they are not likely to be walked on or pinched by items placed on or against them, paying particular attention to the point where the cord attaches to the Digital Photo Frame.
- ◆ **NON-USE.** Unplug the power cord from the outlet when the unit is not in use.
- ◆ **AVOIDING SURGES.** For added protection during a lightning storm, unplug the Digital Photo Frame from the wall outlet to prevent damage to the product due to power line surges.
- ◆ **OVERLOADING.** Do not overload wall outlets or extension cords.
- ◆ **OBJECT AND LIQUID ENTRY.** Do not place objects onto or spill liquids on or inside the Digital Photo Frame.
- ◆ **DAMAGE REQUIRING SERVICE.** Seek service by qualified service personnel when:
 - The power supply has been damaged.
 - Liquid has been spilled onto the Digital Photo Frame.
 - The unit has been exposed to rain.
 - The unit does not operate normally, or exhibits a marked change in performance.
 - The unit has been dropped or physically damaged.
- ◆ **SERVICING.** Do not attempt to service the Digital Photo Frame beyond those means described in these operating instructions. All other servicing should be referred to qualified service personnel.

CAUTION-- To reduce the risk of personal injury or product/property damage:

- ◆ **CLEANING.** Clean the outer surface of the Digital Photo Frame (excluding the screen) gently using a soft cloth dampened with water. Clean the screen only with a specified cleaning solution for use with products such as laptops and computer monitors. These are available at most retail consumer electronics stores. Do not clean the inside of the unit.

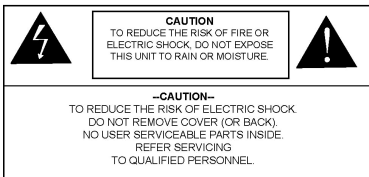
NOTE: *This product operates with an Underwriter's Laboratories (UL) listed Power Transformer. The combined Power Transformer and Digital Photo Frame have not been evaluated for UL listing.*



This symbol alerts the user of the presence of non-insulated "dangerous voltage" within the product's enclosure that may be of sufficient magnitude to constitute a risk of electric shock to persons.



This symbol alerts the user of the presence of important operating and maintenance (servicing) instructions in the Digital Photo Frame user guide.



IMPORTANT INFORMATION REQUIRED BY THE FCC

This device complies with Part 15 of the FCC Rules. Operation is subject to the following two conditions: (1) this device may not cause harmful interference; and (2) this device must accept any interference received, including interference that may cause undesirable operation.

NOTE: This equipment has been tested and found to comply with the limits for a Class B digital device, pursuant to Part 15 of the FCC Rules. These limits are designed to provide reasonable protection against harmful interference in a residential installation. This equipment generates, uses, and can radiate radio frequency energy and, if not installed and used in accordance with the instructions, may cause harmful interference to radio reception, which can be determined by turning the equipment off and on. The user is encouraged to try to correct the interference by one or more of the following measures:

- ◆ Reorient or relocate the receiving antenna.
- ◆ Increase the separation between the equipment and receiver.
- ◆ Connect the equipment into an outlet on a circuit different from that to which the receiver is connected.
- ◆ Consult the dealer or an experienced radio/TV technician for help.

Condensation

If cold water is poured into a glass, water droplets form on the outside of the glass. This is called condensation. Condensation may occur on internal operating parts of the product. Condensation occurs:

- ◆ When the product is brought from the outdoors into a warm room, or if it is in a cold room which is heated quickly.
- ◆ If the unit is moved suddenly from an air-conditioned room or car to a hot or humid location.

Should condensation occur, the product may not operate properly if condensation occurs. Wait 1-2 hours (to allow the internal parts to adjust to the surrounding temperature) before using the product.

SAVE THESE INSTRUCTIONS FOR FUTURE REFERENCE

FREQUENTLY ASKED QUESTIONS

Q: How do I set up my Digital Photo Frame?

A: The Digital Photo Frame setup is very easy from "out-of-the-box" to "up-and-running" in a few short minutes. Just plug the power adapter into the Power In jack on the back of the Digital Photo Frame and plug the power cord into a standard 100-240 volt AC electrical outlet. Next, insert a memory card into the appropriate slot.

Q: What memory cards can the Digital Photo Frame read?

A: The Digital Photo Frame can read all popular memory cards in all sizes including the current large capacity 2 GB cards and above, and 6 card types including: Memory Stick® (MS), Memory Stick PRO®, Memory Stick DUO®, Multimedia Card™ (MMC), Secure Digital™ (SD), Mini-SD™.

Q: What media formats does the Digital Photo Frame support?

A: The Digital Photo Frame supports JPEG picture formats.

Q: I set up the Digital Photo Frame; why is it not powered on?

A: The Adapter is not securely connected to the Photo Frame.

Q: I have a memory card in the Digital Photo Frame; why can't I view the images?

A: First, make sure that the memory card is one of the card formats listed above and that the files on the card are in one of the supported formats as listed above. Second, turn the Digital Photo Frame OFF and make sure that the memory card is inserted all the way into the card slot and is facing the correct direction. Third, turn the frame ON and from the initial card selection menu, make sure that you can select the card. If the card selection is grayed out, then the Digital Photo Frame does not recognize your memory card. Finally, make certain you are selecting the correct Mode from the next menu: Photo for still images.

NOTE: *Some digital cameras save images in non-standard formats. Please refer to your camera's instruction manual for details.*

Q: Why is the picture display slower with some pictures and faster with others?

A: Higher resolution pictures load more slowly. Try using lower resolution pictures or down sample your images. See your camera's operating manual for details on down sampling images.

Q: Can I insert multiple memory cards?

A: Yes. Turn on the unit before you insert any card. The first screen will display which types of memory cards are in the slots. Use the Remote Control to select the desired memory card.

Q: Does the Digital Photo Frame have built-in memory?

A: No, a compatible memory card must be used.

Q: Does the Digital Photo Frame support all JPEG?

A: No, the Digital Photo Frame will support JPEG taken from a digital camera. The Digital Photo Frame may not read all images or video files downloaded from the internet or from other software graphics applications. Some video formats downloaded from the internet are not supported as well.

QUICK START GUIDE



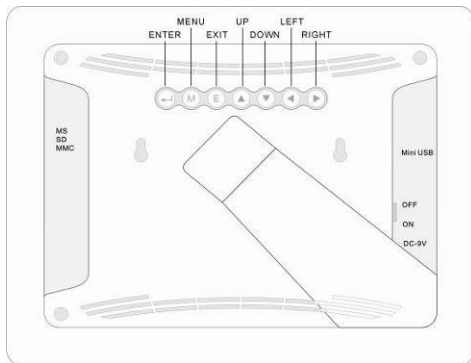
To begin using the Digital Photo Frame, follow these instructions:

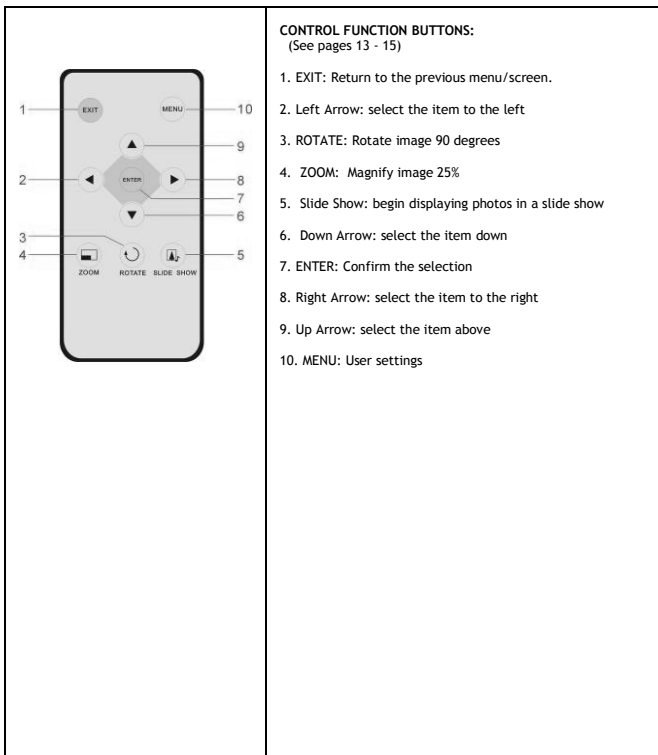
1. Plug one end the AC Adapter into the Digital Photo Frame and plug the other end into a standard 100-240 volt AC electrical outlet.
2. Insert a memory card into the appropriate slot.
NOTE: *The card will only fit in one direction; do not force it. The card should have a firm, snug fit when properly inserted.*
3. Press the ENTER Button to confirm the selection.

On the next menu, scroll using the Arrow Buttons to select PHOTO.

On the next menu, press SLIDESHOW on the Remote Control to display images.

CONTROLS





CARD SELECT MENU

At startup, a menu screen appears for selection of the memory card:

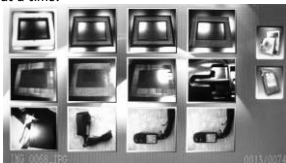


The inserted correct memory card icon is colorful and flashing.

ENTER Press the ENTER Button to confirm.

THUMBNAIL SCREEN

A thumbnail screen will appear to enable easy selection of images. This mode displays a set of up to twelve thumbnail images on the screen at a time.



- ▶ ◀ ▶ ▶ Use the Arrow Buttons on the Remote Control or the Control Panel to select an image.

ENTER Press the ENTER Button on the Remote Control or the Control Panel to view the selected image at full screen size.

SLIDE SHOW and IMAGE CONTROLS

When viewing an image:

- ◀ When paused, press the Left Arrow on the Remote Control or the Control Panel to return to the previous image.
- ▶ When paused, press the Right Arrow on the Remote Control or the Control Panel to skip to the next image.



From the Thumbnail Screen, press the SLIDE SHOW Button on the Remote Control to begin a “slide show” style playback of all images on the selected memory card.

EXIT Press the Exit Button on the Remote Control 3 seconds or Exit Button on the Control Panel to stop image playback and return to the Thumbnail Screen.

When viewing a full screen image, press the MENU Button on the Remote Control or **M** button on the control panel.



ROTATE

- Rotates the image 90° clockwise with each press.
- Rotates the image 90° counterclockwise with each press.

ZOOM

ZOOM While viewing the full screen image, choose the +/- on the Menu. With each repeated operation, the image will become 25% larger / smaller.

- While in Zoom mode, use the Arrow Buttons to pan the image.

To exit: Continue to ZOOM in / out the image; after four times operation, the image will return to normal size.



ASPECT RATIO 4:3 | 16:9

Toggles the aspect ratio of the screen. This function is only available while a menu screen is displayed and will not function while a slideshow is in playback.

NOTE: If the button is pressed while displaying a Full Screen Photo, the display will change to Thumbnail view.

NORMAL 4:3 Changes view to standard 4:3 aspect ratio, which is the standard still image aspect ratio from most digital cameras. Black bars will appear on each side of the screen. Use this mode for viewing standard photos and movies in unaltered proportions.

SMART 16:9 Selects widescreen 16:9 Mode. Use this mode to view any photo or movie using the entire screen of the Digital Photo Frame.

NOTE: Standard photos and movies will stretch to fit the screen. Widescreen movies and photos will display unaltered.



ZOOM Keep the aspect ratio unchanged, only zoom in the image to full screen.

DELETE

You can use the Remote Control to delete images stored in your memory card.

- ▶ ◀ ▶ ◀ From the Thumbnail screen, use the Up and Down Arrows to select (highlight) an image.

Menu Press the Menu Button on the Remote Control or Menu button on the control panel to access the on-screen menu. Use the Arrow to scroll to Delete; press ENTER to confirm.

SETUP

To set viewing preferences:



Menu From the "Image full screen" or "Thumbnail screens", press the Menu Button on the Remote Control to access the setup menu.

From the card select screen, you can choose Menu icon directly.

- ▲ ▼ Use the Up and Down Arrows to make a selection.

ENTER Select the ENTER Button on the Remote Control to choose an item and make a selection.

EXIT Select the EXIT Button on the Remote Control to exit the menu.

PHOTO

SLIDE INTERVAL: Set the display duration for each image.
5 SEC to 60 SEC

SYSTEM

LANGUAGE

Use the Remote Control to choose a display language. Select from English (default), French, Spanish, Dutch, German, Italian, Chinese (simple), and Chinese (traditional). From the main menu:

MENU Press the MENU Button on the Remote Control, choose LANGUAGE and make the selection.

- ▲ ▼ Use the Up and Down Arrows to make a selection.

ENTER Select the desired LANGUAGE to confirm.

ESC Select the EXIT Button on the Remote Control to exit the menu.

LCD POWER SAVING

Use the Remote Control to set the Power shut off time 15 / 30 or 60 minutes, without any operation, the LCD panel will turn off the power automatic.

BRIGHTNESS and CONTRAST

Use the Remote Control to adjust BRIGHTNESS and CONTRAST. From the main menu:

MENU Select the MENU Button on the Remote Control to choose Display Setting, then in the submenu, choose BRIGHTNESS / CONTRAST item and make the selection.

▶ ◀ Use the Right and Left Arrows to make a selection.

ENTER Select the acceptable level to confirm.

ESC Select the EXIT Button on the Remote Control to exit the menu.

ADVANCED OPERATIONS: INSTALLING DRIVERS

The Digital Photo Frame can be connected to a computer to act as a card reader for file transfer from your memory card onto your computer's hard drive.

WINDOWS® XP

No drivers are needed for Windows XP/2000 sp3. Your computer will recognize the Digital Photo Frame upon connection of the USB cable.

WINDOWS 98/98 SE/ME/2000NT

This Digital Photo Frame is not recommended for Windows NT® or older operating systems such as Windows 98/98SE/ME, and Windows 2000 prior to Service Pack 3. Connecting the Digital Photo Frame to a computer that is running any of these operating systems may cause unreliable results and may damage the Digital Photo Frame's firmware.

ADVANCED OPERATIONS: USB CONNECTION TO COMPUTER

To connect the Digital Photo Frame to your computer, you will need a standard USB cable-- Type A Male to Type Mini B 5-pin Male (not included).




1. Connect the AC Adapter to the Digital Photo Frame and slide the Power Switch ON.
2. Connect the small end of the USB cable to the USB port on the back panel of the Digital Photo Frame.
3. Connect the larger end of the USB cable to a USB port on your computer.
NOTE: Connect the Digital Photo Frame directly to the computer; it may not work properly if connected via a USB hub.

Two drive letters entitled "Removable Disc" will appear under the "My Computer" icon in Windows; one for each of the memory card slots on the Digital Photo Frame. With a card inserted, double-click the appropriate "Removable Disc" icon to access that card to copy and delete files between your computer and all installed memory cards.

NOTE: If your PC is connected to Local Area Network drives, or if you have multiple drive letters already assigned to peripheral devices, you will need to manage your drive settings in Windows to free up the four drive letters immediately following your CD-ROM drive so that the Digital Picture Frame can assign them to the memory card slots properly.

To disconnect the Digital Photo Frame from your computer:

1. In Windows, on the bottom task bar, right click this icon  and select "Safely Remove Hardware."
2. The "Safely Remove Hardware" dialog box will appear. Select "USB Mass Storage Device" and click "STOP."
3. On the next dialog box, click "OK" to remove the storage device.
4. On the final dialog box, select "CLOSE" and disconnect the USB cable from your computer.

GLOSSARY OF TERMS

◆ **Aspect Ratio**

The ratio of the length of an image to its width. Most computer screens and digital cameras shoot images that have an aspect ratio of 4:3. 35mm film and some digital cameras shoot images that have an aspect ratio of 3:2.

◆ **Down sampling**

The process of reducing the size of an image by decreasing the resolution (number of pixels) in an image.

◆ **Flash Memory**

A type of non-volatile memory that holds onto its contents even when an electrical charge is not applied. Flash memory is used in many applications including PDAs, hardware MP3 players, and some digital cameras.

◆ **JPEG**

Joint Photographic Experts Group; the development group for a compressed 24-bit color image storage format that also bears its name.

◆ **Memory Card**

The system used to store images by most digital cameras. Unlike a computer memory card, this card retains data even without electricity.

◆ **Mega Pixel**

One million pixels. A high mega pixel rating typically equates to a high maximum performance for graphics, or better quality pictures for digital cameras.

◆ **Resolution**

The amount of pixels that are displayed on a screen measured in pixels horizontal by pixels vertical, such as 1024 x 768. The higher the resolution, the more pixels and greater detail can be displayed. Lower resolutions are interpolated and may lose detail.

◆ **Slideshow**

A display of a series of selected images.

◆ **Thumbnail**

A small representation of a larger graphic often used to display several graphics at once and allowing easy sorting through images.

TECHNICAL SPECIFICATIONS

Input Formats:	Memory Stick® (MS), Memory Stick PRO®, Memory Stick DUO®, Multimedia Card™ (MMC), Secure Digital™ (SD), Mini-SD™
Supported File Formats:	JPEG
OS Support:	Windows XP/XP Pro/2000 sp3
Display:	7" LCD monitor 480 x 234 resolutions
Viewing Modes:	Full frame 16:9/4:3 Standard Aspect Ratio, slide show, or thumbnail
Image Effects:	Rotate, zoom, transitions, slide duration
USB Port:	2.0
Remote Control Battery:	Remote Control uses one Lithium CR2025 3V battery (included)
Power Input:	100V-240V AC, 50-60Hz
Power Output:	9V DC, 2.0A
Weight:	1.5 Lbs (0.68 kg)
Dimensions:	10"W x 7.25"H x 1.75"D (254mm W x 184mm H x 45mm D)