

2.4" Magnet Back Digital Photo Frame

Item Number: 11009974

**(Note: You must charge this device before using it.
This device will be fully charged after 2 hours of charging through the USB cable.)**



Installation and User's Manual

*** Important Notice: Please read this manual carefully**

All brand names and trademarks are the property of their respective owners

Overview

- The 2.4" Digital Photo Frame enables you to view up to 60 digital photos. You can enjoy your photos anytime and anywhere. It is very convenient and quick.
- The Digital Photo Frame does not require a continuous direct connection to a computer.
- A built-in Clock allows you to monitor the time while photos are displayed on the screen.
- Rechargeable Battery is built in and easy to recharge via USB cord connection.
- USB cable connection allows for easy up/downloads of your latest pictures.

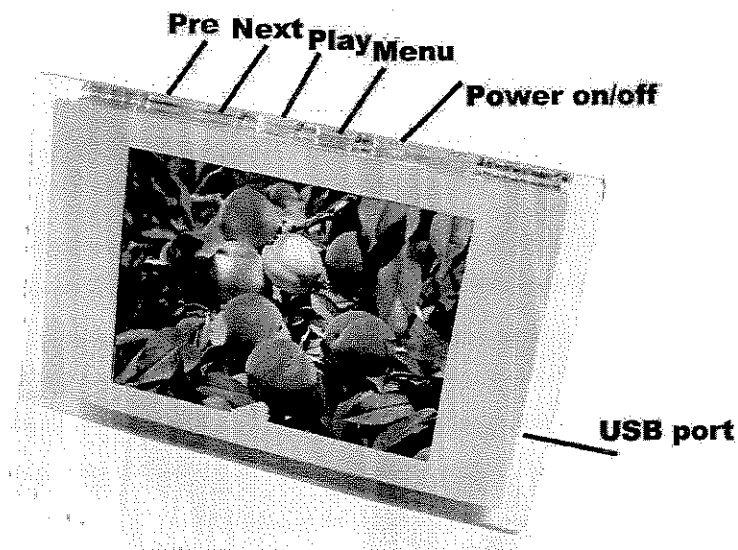
Package Contents

- Digital Photo Frame
- USB Cable
- User's Manual

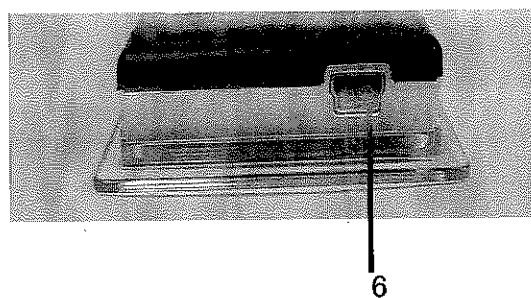
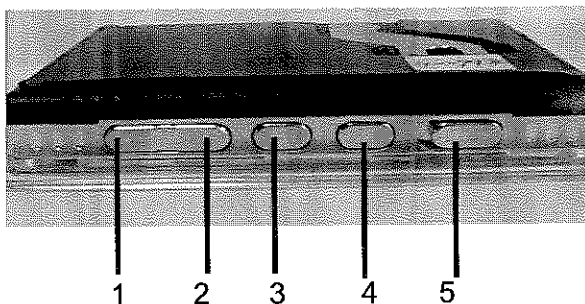
System Requirements

- Microsoft Windows 2000, XP, Vista.
- An available USB port

Location of Control Buttons



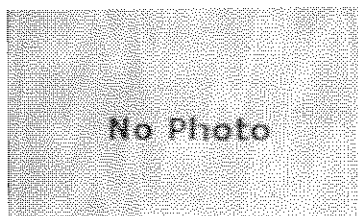
Key Functions, Connections:



1	◀	Previous Picture
2	▶	Next Picture
3	▶/	Confirm
4	M	Menu
5	ON	Power On / Off
6	USB	Cable Connection

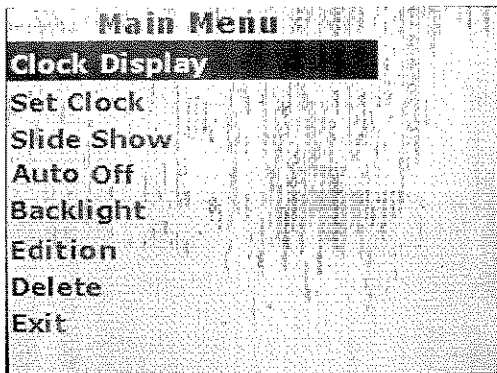
Getting Started:

1. **Note:** Before using the Digital Photo Frame it is best to fully charge the battery inside the unit by connecting your Digital Photo Frame to your computer by using the USB cable included with your unit. Let the battery charge for 2 hours.
2. Turning off the device by using the ON/OFF switch will reset the device to its default settings. Leave the ON/OFF switch in the ON position and power the unit ON/OFF by using the ▶/|| button in order to keep any updated settings.
3. Your computer can detect the DPF automatically if you connect the Player to your PC via the USB cable, you can download the pictures to your DPF.
4. A unique feature this photo frame has is with it's magnetic back panel, it can stick to any metal surface like a school locker or refrigerator door.
5. **Note:** This photo frame only supports BMP and JPEG picture formats, and can only be transferred via the DPFMate conversion software built-into the Digital Photo Frame.
6. When the frame has no files, the screen will display:

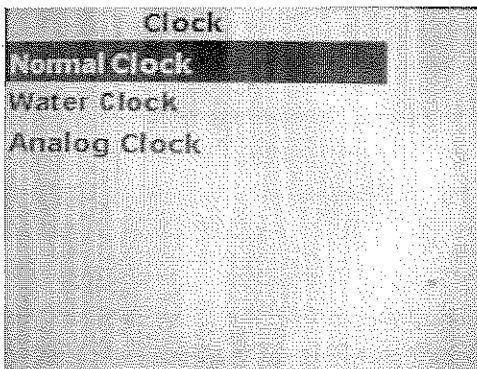


Operating the Digital Photo Frame

Press the Menu button to enter into the main menu as below:



Clock Display—Press “◀” or “▶” to select “Clock Display”, press “▶/||” to confirm, the display will show as below:



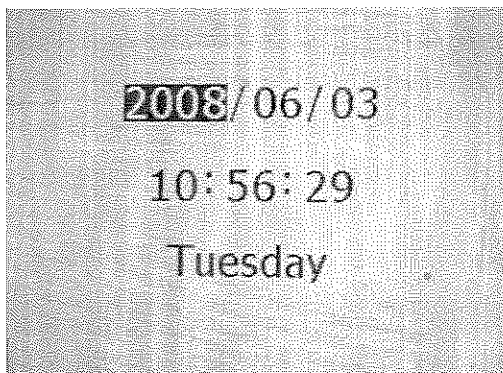
You can choose Normal Clock, Water Clock or analog Clock. Press the “▶/||” button to confirm your choice.

Normal Clock: Only a Digital Clock will show on the display. Press “▶/||” button to enter into the Picture playing mode.

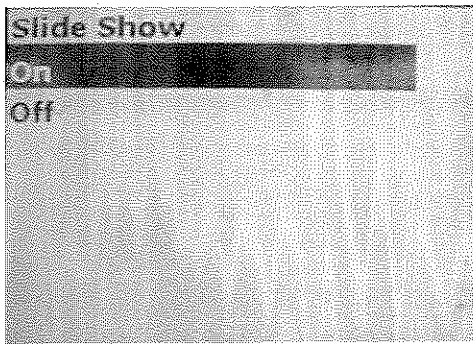
Water Clock: The time will show on the bottom right-hand side of the Display while pictures are being displayed!

Analog Clock: Only an Analog Clock will show on the display.

Set Clock— To select the clock set mode, press the “▶/||” button repeatedly to locate this function. Once you are in CLOCK SET mode press the “▶/||” button to select the date and time, press “◀” and “▶” to set the time, then press “▶/||” to confirm the settings and exit.

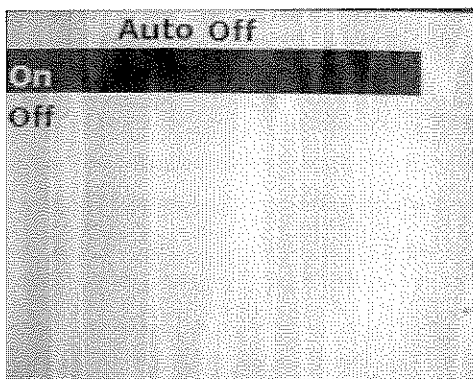


Slide show ---You can set the automatic slideshow time to change pictures based on the time that you want. f time that you want. The pictures will then play automatically based upon the time you have set.

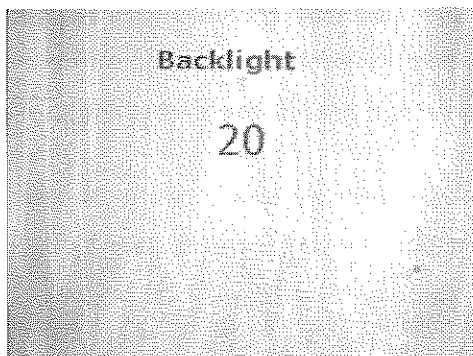


Press "◀" or "▶" button to choose on or off, If you choose slide show on, then set time from 5~15 seconds to let the photos play automatically in seconds. If you choose the slide show off then the pictures will show in manual slide show. Advancement of pictures in this model must be performed manually.

Auto Off---Select the Auto ON/OFF mode, then press the "▶/||" button to enter into it. If you choose Auto Off in the "On" status, then set the time from 1 to 30 minutes to let the photo frame turn off automatically after that time period has expired.

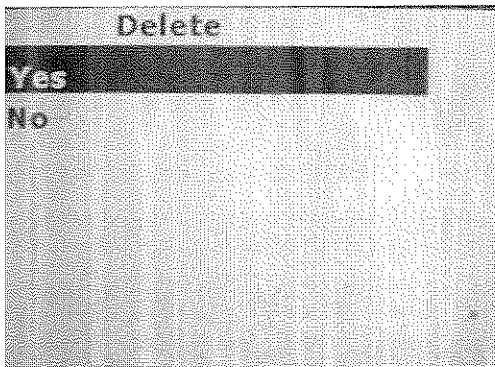


Backlight--- Press "◀" or "▶" button to choose Backlight, press "▶/||" to confirm. The Backlight feature allows you to adjust the brightness(1- lowest, 20- highest) of the photos being displayed. The picture will show as below:



Edition-- Press "◀" or "▶" button to choose, then press "▶/||" to confirm. This will allow you to see which version software is preloaded onto the unit.

Delete-- Press "◀" or "▶" button to choose Delete, then press "▶/||" to confirm deletion of the selected photo. The picture will show as below:

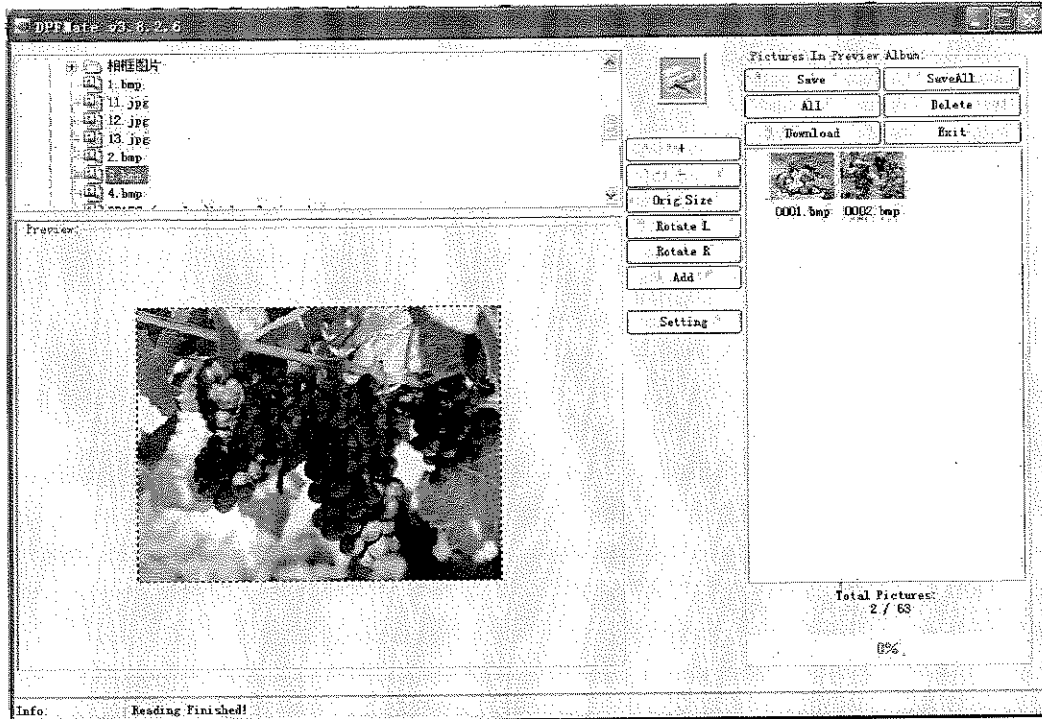


EXIT--Press "◀" or "▶" button to choose "Exit", press "▶/||" to exit the menu screen.

Connecting to the Computer

Connect the Digital Photo Frame to your computer by plugging the USB cable included with your unit into the port on the side of your photo frame using the small mini connector plug and then plug the larger USB plug into your computer.

The PC will detect your DPF automatically and the dialog box will appear as below:



Warnings:

Note 1: When your Digital photo frame is recognized as a removable disk, you cannot open or explore this removable disk and drag or drop photos into this device.

You must use the conversion tool software to store the photos.

Note 2: If you try to click on this removable disk icon from the My Computer screen, your Windows system will ask you to format the device, but this device cannot be formatted. If you try to format it, Windows will show "format fail". This is not a malfunction.

Note 3: WARNING FOR WINDOWS VISTA OS USERS; when you connect this device to some versions of Windows Vista, the Vista operating system will ask you to format the device. Please DISREGARD this warning message. DO NOT format the device.

Downloading Pictures

The Picture Conversion Software Tool can convert pictures of JPG and BMP file formats only. Select the pictures you want from your computer or desktop, click "add", then you will see the selected pictures are in the right side of the dialog box. You can only add pictures one by one. After the selection, click Download and wait until it is completed. The pictures will then be saved in your photo frame.

Delete Pictures

Choose the photo that you want to delete and click "Delete". After that, click download to update the digital photo frame with the changes. Please wait until the download process has finished completely.

Please remove the digital photo frame from your computer as you would a removable storage device

Technical Specifications

Dimensions	8.5x5.5x1.2cm
Screen display size	2.4 inch TFT
Battery	Rechargeable internal battery
Photo formats recognized	JPEG,BMP Slideshow
Memory capacity	32MB NOR flash, can store approximately 60 photos
Accessories	USB Cable, User's Manual

Troubleshooting

Cannot format the device	This is not a malfunction. This is not a USB mass storage device. It is not designed to allow for formatting.
Can't see the picture that you want	Make sure you have converted the image correctly by the software preloaded within the digital photo frame. Make sure you press "Synchronize" after you added the picture to the Album.

FCC Norm

FCC

This equipment has been tested and complies with limits for Class B digital devices pursuant to Part 15 of Federal Communications Commission (FCC) rules.

FCC Compliance Statement

These limits are designed to provide reasonable protection against frequency interference in residential installations. This equipment generates, and radiates radio frequency energy, and if not installed properly or used in accordance with the instructions, may cause harmful interference to radio communication. However, there is no guarantee that interference will not occur in television reception, which can be determined by turning the equipment on and off. Interference may be corrected by one or more of the following measures:

- **Reorient or relocate the receiving antenna**
- **Increase the separation between the equipment and the receiver**
- **Plug the equipment into an outlet on a circuit different from that to which the receiver is connected.**



CAUTION!

The Federal Communications Commission warns the user that changes or modifications to the unit not expressly approved by the party responsible for compliance could void the user's authority to operate the equipment.

Service Procedure

Beyond the retailer return policy, please call the toll free number below to obtain service. A customer representative will give you a return authorization number (RA number) allowing you to ship your product to the service center.

Please have the following information available when you call the service center:

- Your Name and Address
- Date of Purchase
- Model Number
- Serial Number
- Store Name and Address
- Store Location Number
- Type of problem with the unit

After receipt of the RA number:

- Send the complete unit, including power cord and adapter in the original carton to the address below.
- Include a copy of the original receipt for proof of purchase .
- Write the RA number on the outside of the package. Packages without RA numbers will not be accepted.
- The LCD monitor is fragile. Use extreme care when handling and packaging the unit.
- The purchaser is responsible for any shipping charges to the repair facility and assumes all risk.
- The service center will repair or replace the unit and send it back to the purchaser within 10 working days from receipt of the unit.

To contact the service facility, please call 508-435-4830 or (800) 639-3803. The address for this facility is:

Four Star Group
26840 Fargo Ave. Suite C
Bedford Heights, OH 44146

Email Support: techsupport@fourstari.com

*** 30 Day Limited Warranty**

This product is warranted to be free from defects in material and workmanship for a period of 30 days. Warranty obligations are limited to replacement or repair of defective parts and components, at the option of the manufacturer. The warranty of this product is null and void if the product is subjected to negligence, abuse, modification, misuse, accident or if the customer uses the product for a function it was not intended for. This warranty is only valid for the original purchaser of this product and will not be honored if the product is resold.

The manufacturer will not be liable for incidental or consequential damages caused by the use of this product. The manufacturer will not be liable for any costs such as lost profits or revenues, cost of temporary replacements, loss of data, loss of equipment or use of equipment or any claims by third parties.

Please call the phone number included to obtain service. A customer representative will give you a return authorization number (RA number) allowing you to ship product to the service center. The purchaser must have a copy of the original receipt for proof of purchase within 30 days. The purchaser of this product is responsible for any shipping charges to the repair facility. The manufacturer service center will repair or replace the unit in question and send it back to the purchaser within 7 working days of receipt of the unit.